

SOLAFAST CLAMP INSTALLATION GUIDE

Designed for use with 24mm (1in) aperture mesh and 30mm solar panels



METHODS OF INSTALLATION



ALLEN KEY

For hard to reach areas



RATCHET

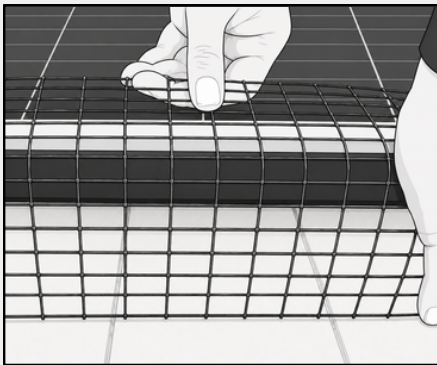
Faster than using an allen key



IMPACT DRIVER

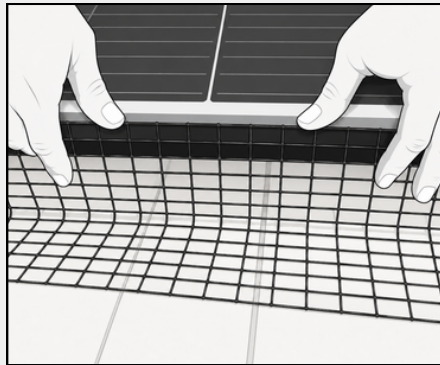
With 105° adaptor (recommended)

1 BEND THE MESH



Position the mesh flush with the edge of the solar panel; bend it over the top of the panel to create a 90° angle.

2 POSITION THE MESH



Turn the mesh over and position it with the flat edge flush to the solar panel.

3 FIT THE CLAMP



Install clamps at 50cm intervals, tightening the grub screws to secure them to the underside of the panel frame.

IMPORTANT INSTALLATION INFORMATION



DESIGNED FOR 24MM MESH

If using narrower-aperture mesh, the apertures will need to be snipped to accommodate the clamps.



DO NOT INSTALL UPSIDE-DOWN

Ensure the screw is fitted to the underside of the panel lip to ensure the solar panel is not damaged.



TIP FOR A FASTER INSTALLATION

If using an impact driver, apply superglue to the base of the 4mm hex bit to hold it securely in the adaptor.

VS

SOLAFAST

PLASTIC CLIPS

Exterior-grade aluminium

Secure mechanical fixing

Permanent UV-resistance

Only 2 clamps per metre

20-year warranty



Plastic construction

Friction-fit fixing

UV degrades over time

Up to 6 clips per metre

Usually no warranty

The professional solution for faster, more reliable mesh installations



FEWER CLAMPS

With only 2 clamps needed per metre of mesh the SolaFast clamp achieves a strong, permanent hold with fewer fittings required than most mesh systems.

- ✓ Strong hold
- ✓ 2 clamps per metre
- ✓ Faster installation



FAST TO FIT

Up to 6 clamps can be fitted per minute using an impact driver (one of the fastest fixing methods on the market). An Allen key or ratchet can also be used.

- ✓ Multiple fitting methods
- ✓ Easy to install
- ✓ Up to 6 clamps a minute



BUILT TO LAST

Manufactured from exterior-grade aluminium with a black powder-coated finish, SolaFast is weather-resistant with a secure fixing for long-term performance.

- ✓ Secure mechanical fix
- ✓ Exterior-grade aluminium
- ✓ UV- and water-resistant

